



# Homed:In

18 Station Road, Southwater, RH13 9HQ



April Close

, Horsham, RH12 2LL

Price Guide £325,000



2



2

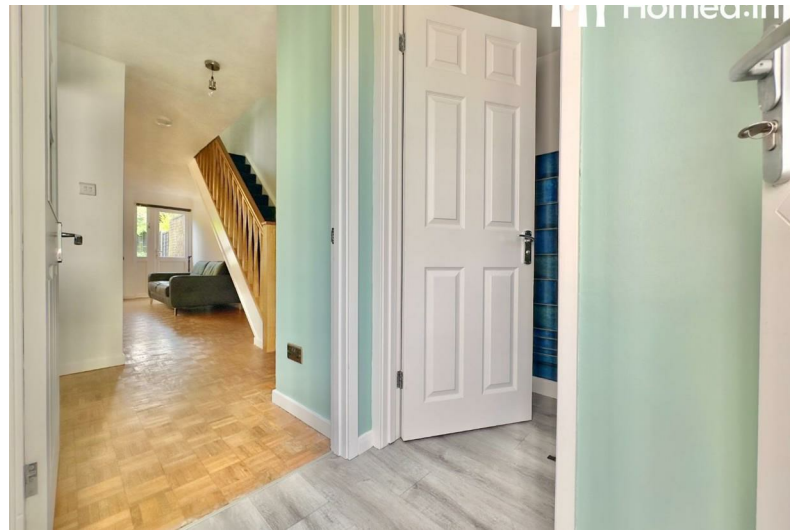


2





# April Close



## Description

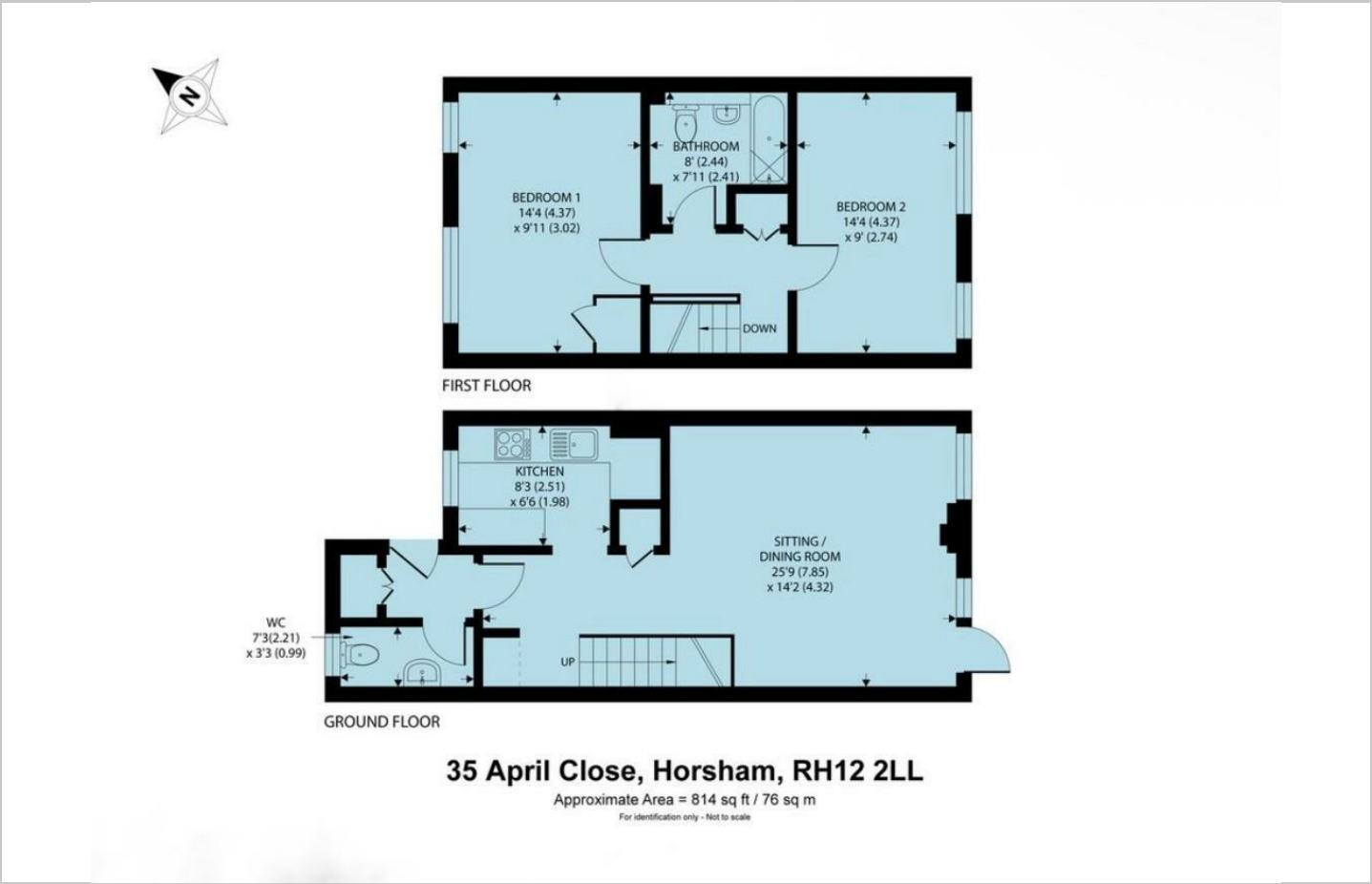
- LARGEST HOME ON MARKET IN CLASS - 850 SQ FT
- Extensively Upgraded
- Wide-open Square Living Room-Diner
- Kitchen, WC Fully Upgraded
- OUTSTANDING STORAGE PROVISION
- Non-residential Position Opposite Green
- Two Big Double Bedrooms
- Kitchen Serving Hatch to Living Room
- VIDEO TOUR IN TAB
- NOW VACANT - NO ONWARD CHAIN







Floor Plan



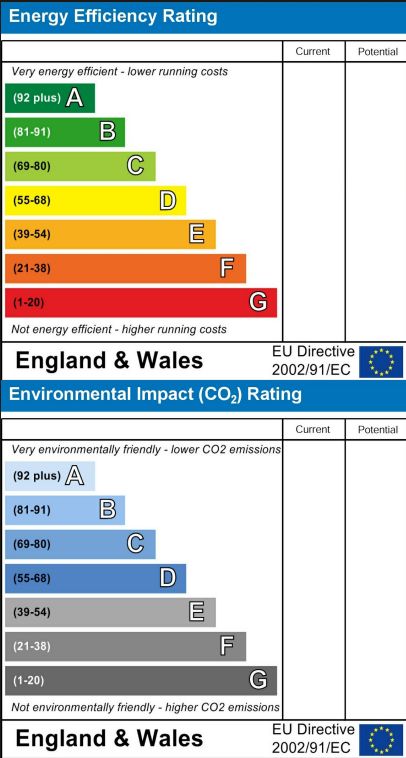
Area Map



Viewing

Please contact our Horsham Office on 01403 597595 if you wish to arrange a viewing appointment for this property or require further information.

Energy Efficiency Graph



These particulars, whilst believed to be accurate are set out as a general outline only for guidance and do not constitute any part of an offer or contract. Intending purchasers should not rely on them as statements of representation of fact, but must satisfy themselves by inspection or otherwise as to their accuracy. No person in this firms employment has the authority to make or give any representation or warranty in respect of the property.

To **GET A FREE VALUATION** Call us on: **01403 597595**  
or email us at: **info@homedin.co.uk**